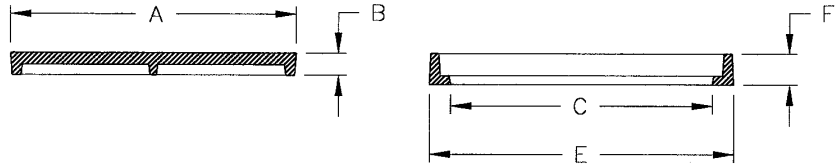


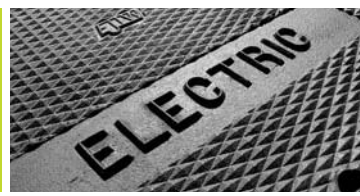
SQUARE AND RECTANGULAR COVERS

EJIW is continually adding new construction castings and drainage grates to our product offering. Please consult with your EJIW representative or email us at ejisales@ejiw.com to request a sales drawing not shown in this catalog.



A	B	C	D	E	F	Catalog
Cover Dim.	Cover Thk.	Clear Opening	Frame Opening	Flange Size	Frame Ht.	Number
6 5/16 x 6 5/16	3/4	5 1/8 x 5 1/8	7 3/8 x 7 3/8	12 1/8 x 12 1/8	9 3/8	8340
7 3/4 x 7 3/4	1 1/2	6 9/16 x 6 9/16	8 x 8	16 1/2 x 16 1/2	9 3/4	8371
7 15/16 x 7 15/16	15/16	6 13/16 x 6 13/16	11 1/8 x 11 1/8	17 3/8 x 17 3/8	15	8365
7 15/16 x 7 15/16	7/8	6 1/2 x 6 1/2	11 1/8 x 11 1/8	16 3/4 x 16 3/4	10	8360
7 3/4 x 7 3/4	1 1/2	6 5/8 x 6 5/8	6 5/8 x 6 5/8	12 5/8 x 12 5/8	15	8375
7 3/4 x 7 3/4	1 1/2	6 5/8 x 6 5/8	6 5/8 x 6 5/8	15 x 15	12 1/4	8370
11 x 26 1/2	1 1/2	9 1/4 x 24	9 1/4 x 24	14 1/4 x 33 1/4	5	8650
11 3/4 x 11 3/4	1	10 x 10	10 x 10	13 1/4 x 13 1/4	1 1/2	8111
12 x 12	7/8	10 1/2 x 10 1/2	10 1/2 x 10 1/2	13 7/16 x 13 7/16	1 1/4	V-6712
12 3/16 x 12 3/16	7/8	11 x 11	13 13/16 x 13 13/16	20 5/8 x 20 5/8	7 1/2	8380
13 3/8 x 13 3/8	1 5/8	11 5/8 x 11 5/8	11 5/8 x 11 5/8	15 3/8 x 15 3/8	2 1/8	V-6713
13 5/8 x 13 5/8	1 1/2	12 1/8 x 12 1/8	13 7/8 x 13 7/8	18 x 18	4	8301 Rev
13 3/4 x 13 3/4	1	12 x 12	12 x 12	15 1/8 x 15 1/8	1 1/2	8115
13 3/4 x 13 3/4	1 1/2	12 x 12	14 x 14	18 x 18	4	8001
13 7/8 x 25 7/8	1	12 x 24	12 x 24	15 1/8 x 27 1/8	1 1/2	V-6751
13 5/8 x 13 5/8	1 1/2	12 1/16 x 12 1/16	13 3/8 x 13 3/8	18 x 18	4	8201 TF
14 3/8 x 14 3/8	1	12 7/8 x 12 7/8	12 7/8 x 12 7/8	15 7/8 x 15 7/8	1 1/2	V-6714
15 7/8 x 15 7/8	1 1/4	14 1/4 x 14 1/4	14 1/4 x 14 1/4	17 1/4 x 17 1/4	1 3/4	8117
17 3/4 x 17 3/4	1 9/16	16 x 16	16 x 16	19 1/4 x 19 1/4	2	8120
18 1/4 x 26 1/4	1 1/2	16 x 24	20 1/16 x 28 1/16	24 x 32	4	8016
18 1/8 x 18 1/8	1 1/2	16 3/8 x 16 3/8	16 3/8 x 16 3/8	19 1/4 x 19 1/4	2	V-6718
19 x 24 3/4	1 1/2	17 x 23 1/16	19 1/4 x 25 1/4	24 x 30	4	8322 Rev
17 3/4 x 21 3/4	1/2	17 1/4 x 21 1/4	17 1/4 x 21 1/4	23 x 27	3	8040 TF
22 1/2 x 45 Dbl	1 9/16	17 7/8 x 40 1/2	18 1/8 x 40 3/4	24 1/2 x 46 7/8	5 1/2	8107 TF
19 3/4 x 19 3/4	1 1/2	18 x 18	20 x 20	24 x 24	4	8004
19 3/4 x 19 3/4	1 1/2	18 x 18	20 x 20	25 1/2 x 25 1/2	4	V-6875-2
19 3/4 x 19 3/4	1 1/2	18 x 18	18 x 18	21 1/4 x 21 1/4	2	V-6720
20 x 20	1 1/2	18 1/4 x 18 1/4	20 1/4 x 20 1/4	24 x 24	4	8304 Rev
20 x 20	1 1/2	18 1/16 x 18 1/16	18 3/8 x 18 3/8	24 1/4 x 24 1/4	4	8204 TF
18 3/4 x 24 3/4	1 1/2	18 x 24	18 x 24	24 x 30 1/8	4	8222 TF
20 x 36	2	18 x 34	18 x 34	22 5/16 x 38 5/16	4	8105
19 3/4 x 19 3/4	11/16	18 11/16 x 18 11/16	18 3/4 x 18 3/4	24 1/16 x 24 1/16	4	8244 TF
19 7/8 x 19 7/8	3/8	18 7/8 x 18 7/8	20 x 20	24 x 24	4	8050
21 3/4 x 21 3/4	1 1/2	20 x 20	22 x 22	26 x 26	4	8305 Rev
21 9/16 x 21 9/16	1 1/2	20 1/8 x 20 1/8	20 1/8 x 20 1/8	26 x 26	4	8205 TF
23 3/4 x 23 3/4	3/4	21 3/4 x 21 3/4	21 3/4 x 21 3/4	28 15/16 x 28 15/16	4	8390 TF
23 3/4 x 23 3/4	1 1/2	22 x 22	24 x 24	29 1/2 x 29 1/2	4	V-6875-3
23 3/4 x 23 3/4	1 1/2	22 x 22	24 x 24	29 1/2 x 29 1/2	4	V-6622

Note: All dimensions are in inches. Rev = Reversible TF = Top Flange



SQUARE AND RECTANGULAR COVERS (CONTINUED)

A	B	C	D	E	F	Catalog
Cover Dim.	Cover Thk.	Clear Opening	Frame Opening	Flange Size	Frame Ht.	Number
23 1/2 x 23 1/2	1 1/2	21 7/8 x 21 7/8	23 3/4 x 23 3/4	28 x 28	4	8306 Rev
23 1/2 x 23 1/2	1 1/2	22 x 22	22 x 22	28 x 28	4	8206 TF
23 3/4 x 35 3/4	1 1/2	22 x 34	24 x 36	29 1/2 x 41 1/2	4	V-6660
24 1/8 x 24 1/8	1 3/4	22 1/4 x 22 1/4	22 1/4 x 22 1/4	25 7/8 x 25 7/8	2 5/8	V-6724
25 3/4 x 31 3/4	1 3/8	23 x 29	26 x 32	31 1/2 x 37 1/2	4	V-6482
25 3/4 x 37 3/4	1 3/8	23 x 35	26 x 38	31 1/2 x 43 1/2	4	V-6465
25 3/4 x 25 3/4	1 1/2	23 1/2 x 23 1/2	23 1/2 x 23 1/2	30 x 30	4	8208 TF
25 3/4 x 31 3/4	11/16	23 13/16 x 29 15/16	24 3/16 x 30 3/16	30 x 36	4	8270 TF
25 11/16 x 37 11/16	5/8	23 7/8 x 35 7/8	26 3/4 x 38 3/4	30 x 42	4	8271 TF
25 3/4 x 25 3/4	2	24 x 24	24 x 24	27 3/4 x 27 3/4	3	V-6726
25 3/4 x 25 3/4	2	24 x 24	26 1/4 x 26 1/4	32 x 32	6	V-6726-2 Rev
25 3/4 x 25 3/4	2	24 x 24	26 x 26	34 x 34	5	V-6726-1 Rev
25 3/4 x 25 3/4	1 1/2	24 x 24	26 x 26	31 1/2 x 31 1/2	4	V-6624 Rev
25 3/4 x 25 3/4	1 1/2	24 x 24	26 x 26	29 15/16 x 29 15/16	4	8308 Rev
25 1/4 x 25 1/4	11/16	24 x 24	24 x 24	30 x 30	4	8247 TF
26 x 26	1	24 x 24	24 x 24	27 1/8 x 27 1/8	1 1/2	8132
26 3/4 x 26 3/4	1 1/2	24 x 24	27 x 27	33 1/2 x 33 1/2	4	8008
25 1/2 x 31 1/2	1 1/2	24 x 30	25 3/4 x 31 3/4	30 x 36	4	8328 Rev
25 1/2 x 31 1/2	1 1/2	24 x 30	24 x 30	30 x 36	4	8228 TF
25 3/4 x 49 3/4	1 1/2	24 x 48	26 x 50	31 1/2 x 55 1/2	4	V-6875-17
25 3/4 x 49 3/4	1 1/2	24 x 48	26 x 50	31 1/2 x 55 1/2	4	V-6667
25 5/8 x 51 1/4	3/4	24 x 49	24 x 49	30 x 55 1/2	4 1/8	8273 TF
25 3/4 x 37 3/4	1 1/2	24 1/8 x 36 1/8	26 x 38	31 1/2 x 43 1/2	4	V-6665
27 x 33	1 3/8	24 3/4 x 29	24 3/4 x 29	44 x 50	11 1/2	8395
31 3/4 x 49 3/4	1 1/2	28 5/8 x 46 5/8	32 x 50	37 1/2 x 55 1/2	4	V-6469
31 7/8 x 37 3/4	2	29 x 35	32 x 38	38 1/8 x 44 1/8	5	V-6468
32 x 50 dbl	1 1/2	29 7/8 x 48	30 1/8 x 50 5/16	36 x 54 1/8	4	8333 Rev
31 3/4 x 31 3/4	1 1/2	30 x 30	32 x 32	36 x 36	4	8313 Rev
31 3/4 x 31 3/4	9/16	30 x 30	30 x 30	36 15/16 x 36 15/16	4	8249 TF
31 7/8 x 37 3/4	2	30 x 36	32 1/8 x 38	38 1/4 x 44 1/4	5	V-6668
31 3/4 x 49 3/4	1 1/2	30 x 48	32 x 50	37 1/2 x 55 1/2	4	V-6875-19
32 x 50 dbl	1 1/2	30 x 48	34 1/4 x 52 1/4	38 x 54	4	8233 TF
31 3/4 x 31 3/4	1 1/2	30 1/8 x 30 1/8	30 5/16 x 30 5/16	36 5/8 x 36 5/8	4	8213 TF
31 3/4 x 31 3/4	1 1/2	30 1/8 x 30 1/8	32 x 32	37 1/2 x 37 1/2	4	V-6630
31 7/8 x 31 7/8	2	30 1/4 x 30 1/4	30 1/4 x 30 1/4	33 7/16 x 33 7/16	2 3/4	V-6732
36 x 60 dbl	2	33 7/8 x 58	33 7/8 x 58	47 7/8 x 72	6	8020
37 3/4 x 49 3/4	1 3/8	34 7/8 x 47	38 x 50	43 1/2 x 55 1/2	4	V-6470
37 3/4 x 37 3/4	1 1/2	35 x 35	38 x 38	43 1/2 x 43 1/2	4	V-6436
37 1/2 x 37 1/2	1 1/2	35 5/16 x 35 5/16	37 5/8 x 37 5/8	41 5/8 x 41 5/8	4	8315 Rev
37 3/4 x 44 dbl	3/4	36 3/16 x 42 11/16	36 3/16 x 42 11/16	44 1/4 x 50 1/4	4	8283 TF
37 3/4 x 37 3/4	1 1/2	36 1/8 x 36 1/8	38 x 38	43 1/2 x 43 1/2	4	V-6636
37 3/4 x 49 3/4	1 1/2	36 1/8 x 48 1/8	38 x 49 7/8	43 1/2 x 55 3/8	4	V-6875-20
37 3/4 x 49 3/4	1 1/2	36 1/8 x 48 1/8	38 x 49 7/8	43 1/2 x 55 3/8	4	V-6670
38 1/2 x 38 1/2	2	36 1/2 x 36 1/2	36 1/2 x 36 1/2	40 3/8 x 40 3/8	2 3/4	V-6736
43 3/4 x 43 3/4	2	41 x 41	44 x 44	50 1/8 x 50 1/8	5	V-6442
43 7/8 x 43 7/8	2	41 3/4 x 41 3/4	44 1/4 x 44 1/4	50 1/8 x 50 1/8	5	V-6875-9
43 7/8 x 43 7/8	2	41 3/4 x 41 3/4	44 1/4 x 44 1/4	50 1/8 x 50 1/8	5	V-6642
50 5/8 x 50 5/8	1 5/8	48 5/8 x 48 5/8	51 x 51	58 3/4 x 58 3/4	4 3/8	V-6875-10
50 5/8 x 50 5/8	1 1/2	48 5/8 x 48 5/8	51 x 51	58 3/4 x 58 3/4	4 3/8	V-6648

Note: All dimensions are in inches. Rev = Reversible TF = Top Flange