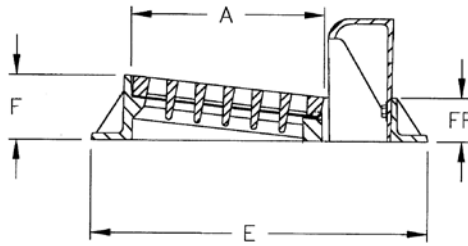


## CURB INLETS



Grate Dimension width length	Base Flange width length	Frame Ht. F	Frame Ht. FF	Sq. In. Open	Grate Style	Frame Series
11 3/8 x 28 3/4	29 x 36	10	8 1/2	85	7210M4 Vane	7210
10 7/8 x 20	31 x 31	7	6	100	7205M1	7205
16 5/8 x 21 7/8	36 x 34 7/8	10	7 3/4	100	7220M4 Vane	7220
17 3/4 x 23 3/4	28 x 30	5	4	100	7700M2 Vane	7701
17 3/4 x 23 3/4	28 x 30	5	4	100	7700M3 Bidirect.	7701
24 x 13 5/8	33 1/4 x 36	6	9 3/4	110	7545M2 Vane	7545
16 x 23	36 x 36	8	7	125	7010M4 Vane	7010
17 3/4 x 23 3/4	28 x 30	5	4	128	7700M1	7701
16 1/16 x 23	36 x 36	8	7	130	7010M1	7010
11 3/8 x 28 3/4	29 x 36	10	8 1/2	130	7210M1	7210
16 1/4 x 24	34 1/2 x 34 1/2	9 3/8	10 1/2	130	7463M2*	7463
16 1/4 x 24	29 1/4 x 34 1/2	9 1/2	10 1/2	130	7463M2*	7464
17 x 21 3/8	34 x 34	6 1/2	5 1/2	135	7000M1	7000
11 1/4 x 28 11/16	29 x 36	10	8 1/2	135	7210M2	7210
17 3/4 x 23 3/4	28 x 30	5	4	135	7700M4 ADA	7701
17 x 21 3/8	27 1/4 x 34 3/8	6 3/4	5 1/2	135	7000M1*	7290
18 x 22 1/2	37 x 37	6 3/4	6 1/4	140	7010M2 Sinusoidal	7020
18 x 22 1/2	37 x 37	6 3/4	4 3/4	140	7010M2 Sinusoidal	7022
16 x 23	36 x 36	8	7	140	7010M3 Sinusoidal	7010
16 1/4 x 22 1/4	26 7/16 x 29	12 15/16	10 3/4	140	7170M2	7170
16 1/4 x 22 1/4	29 1/2 x 32 1/4	10 5/8	12 3/8	140	7170M2	7171
17 x 22	38 x 38	6 1/4	5 1/4	140	7310M2	7310
19 7/8 x 22 7/8	26 3/4 x 32 11/16	7	7	142	V-4091-2	V-4091
16 7/8 x 22	36 x 31	10	7 3/4	145	7220M2	7220
16 7/8 x 22	36 x 31	10	7 3/4	145	7220M3 Sinusoidal	7220
20 1/8 x 21 5/8	32 x 32	10 1/4	10 1/4	145	7500 Cover	7500
15 5/8 x 21 5/8	33 5/8 x 33 3/8	7 7/8	7 7/8	145	7520M2	7520
17 x 21 3/8	34 x 34	6 1/2	5 1/2	150	7000M2 Sinusoidal	7000
19 7/8 x 22 7/8	26 3/4 x 32 11/16	7	7	156	V-4091-1	V-4091
19 7/8 x 22 7/8	26 3/4 x 32 11/16	7	7	156	V-4091 Vane	V-4091
16 x 23	36 x 36	8	7	160	7010M5 Diagonal	7010
18 5/8 x 22 1/4	36 x 36	9 1/8	7 3/4	160	7040M1	7045
18 11/16 x 22 1/4	36 x 36	9 1/8	7 11/16	160	7040M1	7050
18 5/8 x 22 1/4	36 5/16 x 36 5/16	9 1/8	7 3/4	160	7045M1	7056
18 5/8 x 22 1/4	36 x 36	9 1/8	7 3/4	160	7045M1	7065
18 5/8 x 22 1/4	36 x 36	9 1/8	7 3/4	160	M1 Sinusoidal	7045
18 5/8 x 22 1/4	36 x 36	9 1/8	7 3/4	160	M2 Adj. Sinusoidal	7045
16 7/8 x 21 7/8	36 x 34 7/8	10	7 3/4	165	7220M1	7220
16 7/8 x 22	31 x 36	10	7 3/4	165	7221M1	7221

Note: All dimensions are in inches.



## CURB INLETS (CONTINUED)

Grate Dimension width length	Base Flange width length	Frame Ht. F	Frame Ht. FF	Sq. In. Open	Grate Style	Frame Series
24 x 20 1/8	33 1/4 x 36	6	9 3/4	165	7545M1 Vane	7545
17 1/4 x 24	30 x 33	5	8	165	7711M3 Vane LH & RH	7711
18 x 22 1/2	37 x 37	6 3/4	6 1/4	170	7010M3 Sinusoidal	7020
18 x 22 1/2	37 x 37	6 3/4	4 3/4	170	7010M3 Sinusoidal	7022
17 x 22	38 x 38	6 1/4	5 1/4	170	7310M1	7310
22 3/4 x 22 3/4	31 3/16 x 38	9 3/4	8 7/8	170	7570M3 Vane	7570
19 1/4 x 19 1/4	28 1/4 x 30	10	12 1/2	175	7280M	7280
19 1/4 x 19 1/4	30 x 31	10	12 1/2	175	7280M	7281
15 x 23	35 x 35	9	6	175	7420M	7420
18 5/8 x 22 1/4	36 x 36	7 11/16	9 1/8	180	M3 Sinusoidal	7045
16 1/4 x 22 1/4	26 7/16 x 29	10 5/8	12 3/8	185	7170M1	7170
16 1/4 x 22 1/4	29 x 32 1/4	10 5/8	12 3/8	185	7170M1	7171
23 1/2 x 26	29 3/4 x 38	5 3/4	10 1/8	185	7495M4 Bidirect.	7495
17 1/4 x 24 1/4	30 x 33	5	8	189	7711M1	7711
16 x 31	25 3/4 x 40 3/4	6	6	189	7765M Vane	7765
18 1/2 x 21 7/8	23 5/8 x 23 5/8	9	16 1/2	190	7411M	7411
15 5/8 x 34 3/4	31 1/2 x 43 1/2	7 7/8	7 1/8	190	7505M1	7505
22 3/4 x 22 3/4	31 13/16 x 38	9 3/4	8 7/8	190	7570M1 Vane	7570
22 3/4 x 22 3/4	31 3/16 x 38	9 3/4	8 7/8	190	7570M1 Vane*	7571
22 3/4 x 22 3/4	31 3/16 x 38	8 7/8	9 3/4	190	7570M1 Vane*	7582
22 3/4 x 22 3/4	31 13/16 x 38	9 3/4	8 7/8	192	7570M2 Diagonal	7570
17 x 21 3/8	34 x 34	6 1/2	5 1/2	195	7000M3	7000
18 x 22 1/2	37 x 37	6 3/4	6 1/4	195	7020M1	7020
18 x 22 1/2	37 x 37	6 3/4	4 3/4	195	7020M1	7022
18 5/8 x 22 1/4	30 1/16 x 36	9 1/8	7 3/4	195	7045M1	7066
16 3/4 x 29 7/8	24 1/2 x 36 9/16	7 1/2	5 1/2	195	7350M2 Bar grate	7350
16 3/4 x 29 7/8	24 1/2 x 36 9/16	7 1/2	5 1/2	212	7350M3 Vane	7350
25 3/4 x 25 3/4	33 1/2 x 33 1/2	10 7/8	10	213	7550M RH & LH	7550
17 1/4 x 28 3/4	29 x 36	10	15 3/4	215	7180M2	7180
22 x 22 1/8	36 x 36	10	13 5/8	215	7236M2	7236
23 5/8 x 24 1/4	36 x 36	6 3/4	8 3/4	220	7075M1	7076
23 1/4 x 24 1/4	31 x 36	8 3/4	12 1/2	220	7085M1	7085
22 3/4 x 22 3/4	34 7/8 x 34 7/8	10	12	220	7300 DNW	7300
23 1/4 x 23 1/4	32 3/4 x 32 3/4	7 1/4	11 1/8	220	7490M1	7490
17 3/4 x 35 1/2	31 x 43	6	4	225	7030M5 Diagonal	7030
18 3/4 x 25 5/8	27 1/2 x 34 1/8	10	10 3/4	225	7250M1	7250
22 1/4 x 24	29 1/4 x 34 1/2	10 1/2	9	225	7466M2 Vane	7467
19 1/16 x 25 1/2	36 x 35 7/8	8 1/16	10 1/2	225	7525M	7525
23 9/16 x 26	29 3/4 x 38	5 3/4	10 1/8	227	7495M3	7495
11 3/8 x 28 3/4	29 x 36	10	8 1/2	230	7210M3	7210
23 1/4 x 23 1/4	32 3/4 x 32 3/4	7 1/4	11 1/8	230	7490M3	7490
16 7/8 x 38	23 3/16 x 41 3/8	5 1/2	5 1/2	230	V-4092 Vane (1/2)	V-4092
23 5/8 x 24 1/4	31 x 36	8 3/4	6 3/4	240	7075M1	7070
23 5/8 x 24 1/4	36 x 36	6 3/4	8 3/4	240	7075M2 Sinusoidal	7076
21 3/8 x 22 11/16	36 x 36	10	15 5/8	250	7235M1	7235
22 x 22 3/4	36 x 36	10	15 5/8	250	7235M2	7235
17 5/8 x 35 3/8	47 5/16 x 47 5/16	9 1/8	6 7/8	250	7360M1	7360
23 1/2 x 26	29 3/4 x 38	5 3/4	10 1/8	250	7495M1 & M2	7495
22 1/2 x 22 1/2	26 1/2 x 34 7/8	9	10	250	7535M	7535

Note: All dimensions are in inches.

## CURB INLETS (CONTINUED)

Grate Dimension width length	Base Flange width length	Frame Ht. F	Frame Ht. FF	Sq. In. Open	Grate Style	Frame Series
22 1/2 x 22 1/2	32 1/2 x 35 1/8	10	8 3/4	250	7535M	7540
17 3/4 x 35 1/2	31 x 43	6	4	260	7030M2	7030
17 3/4 x 35 1/2	31 x 43	6	4	260	7030M4 Vane	7030
17 3/4 x 35 1/2	31 1/4 x 43	9 1/8	7 1/8	260	7030M2*	7035
17 3/4 x 35 1/2	31 x 43	6	4	260	7030M6 Vane	7030
21 1/8 x 31 1/2	33 7/8 x 35 1/4	6	6	266	V-4285-3 Vane	V-4078
21 1/8 x 31 1/2	24 5/8 x 36 3/4	6	6	266	V-4285-3 Vane	V-4078
17 1/4 x 28 3/4	29 x 36	10 5/16	16	270	7180M1	7180
21 1/8 x 31 1/2	24 5/8 x 36 3/4	6	6	273	V-4285-1	V-4078
21 1/8 x 31 1/2	24 5/8 x 36 3/4	6	6	273	V-4285-1	V-4078
22 x 36	30 x 37 11/16	6	8 3/4	290	7555M2	7555
21 1/8 x 31 1/2	24 5/8 x 36 3/4	6	6	300	V-4285-2	V-4078
21 1/8 x 31 1/2	24 5/8 x 36 3/4	6	6	300	V-4285-2	V-4078
23 1/2 x 29 5/8	33 3/4 x 37 7/8	6	8 11/16	305	7370M	7370
18 x 36	25 1/8 x 47 5/8	6	6	312	V-4070	V-4070
17 3/4 x 35 1/2	31 x 43	6	4	315	7030M3 Diagonal	7030
17 3/4 x 35 1/2	46 9/16 x 46 9/16	9 1/8	7 1/8	315	7030M3 Diagonal*	7037
27 3/4 x 28	34 x 35 1/4	5 3/8	9	316	7430M1	7430
23 3/4 x 35 7/8	36 x 43	6 1/2	4	324	7510M4	7510
22 x 36	30 x 37 11/16	6	8 3/4	325	7555M1	7555
22 x 36	30 x 37 11/16	6	11 3/4	325	7555M1*	7560
27 3/4 x 29	36 1/4 x 38 3/8	8	11 1/2	330	7390M2	7390
22 x 36	30 x 37 11/16	6	8 3/4	330	7555M3 Vane	7555
27 3/4 x 29	44 x 44	11 1/2	8	330	7390M2*	7395
21 3/4 x 47 3/4	48 x 54	5 1/2	5	338	7590M1	7590
21 3/4 x 47 3/4	36 x 54	5 1/2	5	338	7590M1	7591
27 3/4 x 29	36 1/4 x 38 3/8	8	11 1/2	340	7390M3 Sinusoidal	7390
23 3/4 x 35 7/8	36 x 43	6 1/2	4	340	7510M2 Sinusoidal	7510
22 3/4 x 39 1/2	30 x 40 1/2	5	5	340	7567M Vane	7568
21 3/4 x 36 1/4	24 1/4 x 44 1/2	5	5	359	V-4071 Vane	V-4074
23 3/4 x 35 3/4	28 3/4 x 43 3/4	7	7	368	V-4067-3	V-4067
22 3/4 x 39 1/2	30 x 40 1/2	5	5	370	7567M2	7568
23 3/4 x 35 3/4	31 1/4 x 43	7	4	370	V-4066-3 Diagonal	V-4066
23 3/4 x 35 3/4	31 1/4 x 43	7	4	370	V-4066-4 Diagonal	V-4066
23 3/4 x 35 1/2	31 x 43 1/2	6	4	380	7034M Flat	7034
24 3/8 x 36 1/2	45 1/16 x 45 1/16	8	6 5/8	382	V-4069-1	V-4069
23 3/4 x 35 3/4	28 3/4 x 43 3/4	7	7	383	V-4067-1	V-4067
16 3/4 x 29 7/8	24 3/4 x 67	7 1/2	5 1/2	390**	7350M2 Bar grate	7355
16 3/4 x 29 7/8	24 1/2 x 69	7 1/2	5 1/2	390**	7350M2 Bar grate	7358
15 5/8 x 34 3/4	31 1/2 x 43 1/2	7 7/8	7 1/8	400	7505M3 Vane	7505
28 x 36	31 5/8 x 41	4 1/4	3	400	V-4842	V-4140
23 3/4 x 35 7/8	36 x 43	6 1/2	4	410	7510M1 Diagonal	7510
28 x 36	31 5/8 x 41	4 1/4	3	410	V-4843	V-4140
28 x 36	31 5/8 x 41	4 1/4	3	410	V-4844	V-4140
21 3/4 x 47 3/4	48 x 54	5 1/2	5	415	7590M	7590
21 3/4 x 47 3/4	36 x 54	5 1/2	5	415	7590M	7591
16 3/4 x 29 7/8	24 3/4 x 67	7 1/2	5 1/2	424**	7350M3 Vane	7355
16 3/4 x 29 7/8	24 1/2 x 69	7 1/2	5 1/2	424**	7350M3 Vane	7358
23 3/4 x 35 13/16	31 1/4 x 43	7	4	435	V-4066-1	V-4066

Note: All dimensions are in inches. \* Other style grates available \*\* Double Inlet



## CURB INLETS (CONTINUED)

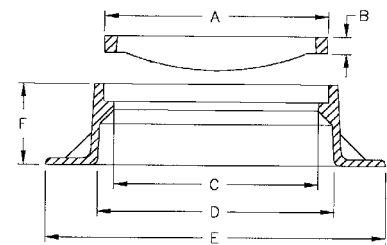
Grate Dimension width length	Base Flange width length	Frame Ht. F	Frame Ht. FF	Sq. In. Open	Grate Style	Frame Series
23 3/4 x 35 3/4	31 1/4 x 43	7	4	435	V-4066-2	V-4066
22 1/2 x 22 1/2	35 1/2 x 55 1/2	7 7/8	7 7/8	440	5425M2 Vane	7565
23 3/4 x 35 7/8	36 x 43	6 1/2	4	446	7510M3 Vane	7510
28 x 36	31 5/8 x 41	4 1/4	3	460	V-4840	V-4140
22 1/2 x 45	24 11/16 x 60 3/16	9	10	500	7535M	7536
17 3/4 x 35 1/2	31 x 80	6	4	520	7030M2 Double*	7031
35 3/4 x 17 3/4	31 1/4 x 80 3/4	9 1/8	7 1/8	520	7030M2 Double*	7036
23 1/2 x 59 3/8	33 3/4 x 69 3/4	6	8 11/16	610**	7370M	7371
28 x 29	38 1/2 x 67 1/2	8	11 1/2	660**	7390M2	7391
28 x 29	38 1/2 x 67 1/2	8	11 1/2	680**	7390M3 Sinusoidal	7391
17 3/4 x 35 1/2	31 x 117	6	4	780	7030M2 Triple*	7032
23 3/4 x 35 7/8	37 x 81 1/2	6 1/2	4	820**	7510M1 Diagonal	7511
22 x 22	38 Diameter	9 3/4	9 3/4	NA	7530A	7530
22 3/4 x 22 3/4	34 x 34	4	4	NA	Solid cover	7260
21 x 28 3/4	23 3/8 x 31 1/8	3 1/4	3 1/4	NA	Bar grate	V-4275
24 1/2 x 27 3/4	36 x 41 3/4	9	7 1/2	NA	Steel grate	7140
24 1/2 x 37 1/2	46 x 41 3/4	9	7 1/2	NA	Steel grate	7150
24 1/2 x 47 1/2	56 x 41 3/4	9	7 1/2	NA	Steel grate	7155

\* Other style grates available

\*\* Double Inlet

## CATCH BASINS

EJIW is continually adding new construction castings and drainage grates to our product offering. Please consult with your EJIW representative or email us at [ejjwsales@ejjw.com](mailto:ejjwsales@ejjw.com) to request a sales drawing not shown in this catalog.



A Grate Dimension	B Grate Thk.	C Clear Opening	D Frame Opening	E Base Flange	F Frame Ht.	Sq. In. Open	Catalog Number
5 3/4 x 35 3/4	2	4 3/4 x 32 1/2	4 3/4 x 32 1/2	9 3/4 x 36 3/4	5 3/4	75	5310
9 1/2 x 9 1/2	1	8 x 8	8 x 8	10 3/4 x 10 3/4	1 1/2	33	V-5708
12 x 12	1	10 x 10	10 x 10	13 1/4 x 13 1/4	1 1/2	56	8111
12 x 12	7/8	10 1/2 x 10 1/2	10 1/2 x 10 1/2	13 7/16 x 13 7/16	1 1/4	66	V-5712
11 7/8 x 11 7/8	1	10 5/8 x 16 5/8	10 5/8 x 16 5/8	13 5/8 x 19 5/8	1 1/2	93	V-5750-1
13 3/8 x 13 3/8	1 5/8	11 5/8 x 11 5/8	11 5/8 x 11 5/8	15 3/8 x 15 3/8	1 1/8	55	V-5713
13 1/4 x 27 1/4	2	11 3/4 x 25 3/4	11 3/4 x 25 3/4	16 x 30	4	77	V-4274
13 1/2 x 13 1/2	1	12 x 12	12 x 12	15 1/8 x 15 1/8	1 1/2	Solid Cover	8115
13 7/8 x 25 3/8	1 7/8	12 x 23 1/2	12 x 23 1/2	22 x 33 1/2	3	130	V-5104
13 5/8 x 13 5/8	1 1/2	12 1/8 x 12 1/8	12 1/8 x 12 1/8	18 x 18	4	50	8201 TF
13 5/8 x 13 5/8	1 1/2	12 1/8 x 12 1/8	12 1/8 x 12 1/8	18 x 18	4	50	8301 Rev
14 x 19 3/4	1	12 1/2 x 18 5/8	12 1/2 x 18 5/8	19 13/16 x 25 1/4	1 3/4	100	7720
14 1/2 x 14 1/2	1	13 1/4 x 13 1/4	13 1/4 x 13 1/4	16 x 16	1 9/16	77	V-5714

Note: All dimensions are in inches. Rev = Reversible TF = Top Flange